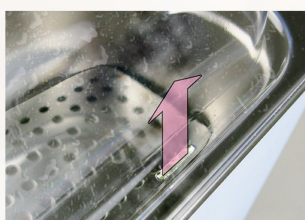


10L / 20L Stirring Water Bath SWB series

The MS Stirring Water Bath series packed with built-in thermostatic baths are innovative product line to provide precise temperature control and excellent mixing performance for a wide range of laboratory applications. The built-in stirring mechanism not only provides outstanding temperature uniformity, but also applies a stirring mixture function. The 10L or 20L stainless steel tank can operate flask(s) containing a moderate amount of solution simultaneously. Single stirring mechanism model and multi-stirring models are available for your preference.



SWB-10L



Built-in magnetic stirring mechanism



Max. chamber capability
(no using stirring mixture function):
6 sets of 250ml flasks
4 sets of 500ml flasks



Compatible Bottle of SWB -20L-3

	≤500ml	1L	2L
	3	3	2 (position 1 & position 3)
	3	2 (position 1 & position 3)	2 (position 1 & position 3)*
	3	3	2 (position 1 & position 3)



CE

SWB-20L

The size of different brand bottle may vary slightly. Please refer the following table as reference only.



Max. chamber capability
(no using stirring mixture function):
15 sets of 250ml flasks
8 sets of 500ml flasks

*Using as a water bath and the picture is only for reference

**Teflon Stir Bar, Cylindrical, L560 mm.

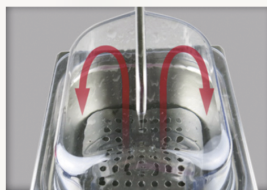
*When 2L Erlenmeyer Flask is applied, it may be too high for the lid of water bath to put on.

Features

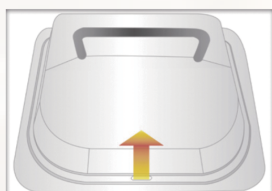
- Microprocessor control with digital performance for precise, accurate control
- Built-in magnetic stirring mechanism for water agitation, water temperature uniformity and medium solution mixing
- Stirring speed control
- LCD screen shows temperature and timer simultaneously
- User temperature calibration
- Safety device: warning indication on screen to avoid overheating and automatic shut down
- Multiple stirring mechanism capability
- Data Logging software available

* All images are for reference only, actual products might differ from the pictures above.

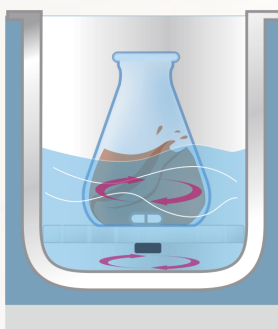
* Technical specifications subject to change without notice.



Concave lid design allows condensation flow back to the tank.



Side opening of the lid to allow minimum evaporation while maintaining water bath temperature.



Water circulation function

- Magnetic agitator
- Stir bar

Specifications

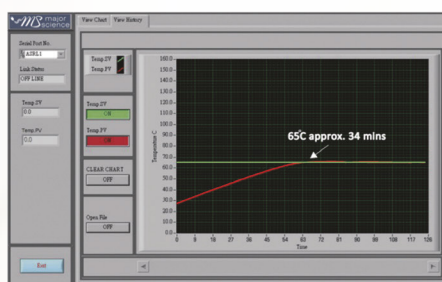
Cat. No.	SWB-10L-1	SWB-10L-2	SWB-20L-1	SWB-20L-3
Number Of Stirring Mechanisms	1	2	1	3
Stirring Speed	400-1500rpm (measured by percentage, nonlinearity)			
Bath Capacity	Approx. 2.64gal (10L)		Approx. 5.28gal (20L)	
Water Circulation Function	Yes			
Display	LCD			
Heating Power	600W		800W	
Controller	Digital microprocessor controller			
Bath Temperature	5 °C above ambient to 99 °C			
Temperature Increment	0.1°C			
Temperature Accuracy	±0.2 °C at 37 °C			
Temperature Calibration	Yes			
Timer	99 (hr): 59 (min) / Continuous			
Safety Device	Warning indication on screen with alarm and automatic shut down			
Operating Temperature	Ambient to 40 °C			
Bath Tank Material	304 stainless steel			
Bath Inner Dimension (WxLxH)	Approx. 9.5"x11.8"x5.9" (240x300x150mm)		Approx. 11.8"x19.7"x5.9" (300x500x150mm)	
Dimension (WxLxH) (without lid)	Approx. 10"x14"x9.5" (255x355x240mm)		Approx. 13"x21.3"x9.5" (330x540x240mm)	
Rear Drainage Port	N / A		Yes	
Material	Painted iron metal			
Lid Material	Polycarbonate with stainless steel handle			
Communication Port	RS232			
Weight	Approx. 19.8lb (9kg)		Approx. 30.9lb (14kg)	
Rated Voltage	110V / 220V~			

Ordering Information

Cat. No.	Product Description
SWB-10L-1-110 / 220	10L Stirring Water Bath with 1 built-in stirring mechanism, lid included
SWB-10L-2-110 / 220	10L Stirring Water Bath with 2 built-in stirring mechanism, lid included



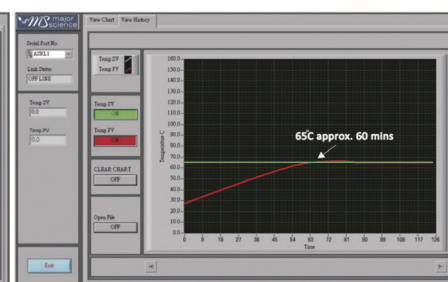
* All images are for reference only, actual products might differ from the pictures above.
 * Technical specifications subject to change without notice.



SWB-10L series

- Temp. set value : 65 oC
- Initial temp. value : 17 oC

Water volume : 5 liters
 Process time : Approx. 34mins



SWB-20L series

- Temp. set value : 65 oC
- Initial temp. value : 27 oC

Water volume : 12 liters
 Process time : Approx. 60mins

Taiwan Office

No. 156, Sec. 1, Guoji Rd., Taoyuan Dist.,
 Taoyuan City 330041, Taiwan
 T/+886-3-3762878
 F/+886-3-3761310

US Office

19959 Sea Gull Way
 Saratoga, CA 95070
 U.S.A.
 T/ +1-408-366-9866
 F/ +1-408-446-1107

Shanghai Office

Room 612, International business exhibition center,
 9300 Hunan Road, Pudong, Shanghai, China
 National toll-free No.:400-823-9177
 T/ +86-21-50795277
 F/ +86-21-50795277

India Office

D.No.7-143, 2nd Floor,
 St.No.2, Nagendra Nagar,
 Habsiguda, Hyderabad-500007.
 India
 T/ +91-40-27001515
 T/ +91-40-27001586